



Welcome to  
Highland Oaks Middle  
School  
2023-2024

Ms. Cheryl Kushi, Principal  
Ms. Lissette Burns, Assistant Principal

Translation  
Presentations

Spanish Room  
49 – Ms. Burns

Russian Room  
40 – Ms. Weiss

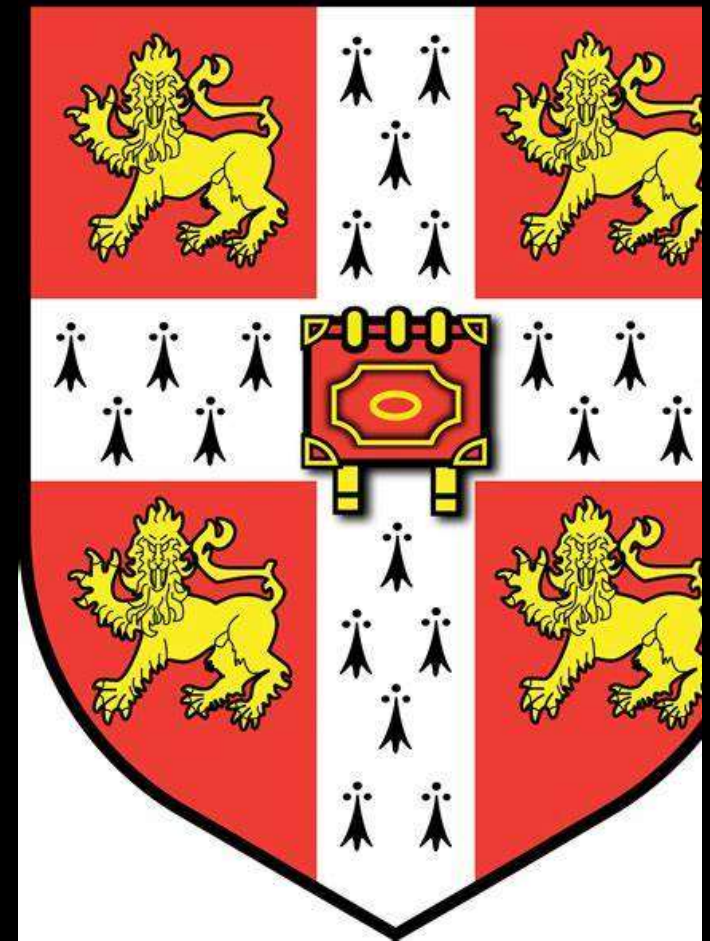


# 2023-2024 Theme

# Cambridge School & Other Course Offerings

---

- Cambridge curriculum encourages students to become confident, responsible, reflective, innovative and engaged learners. In the Cambridge Primary Programme, students develop skills and understanding in English, math, and science.
- Some students might see this on their schedule (lower secondary...Cambridge)
- Some students have Advanced, Gifted, ESOL, Special Education
- Some students have High School Courses (we offer 6 courses)
- All students will have one class every other day for Study Hall.....homework, iReady, social emotional learning, and more
- Some students courses say “Critical Thinking” ....Let me explain....Check the wall for details.





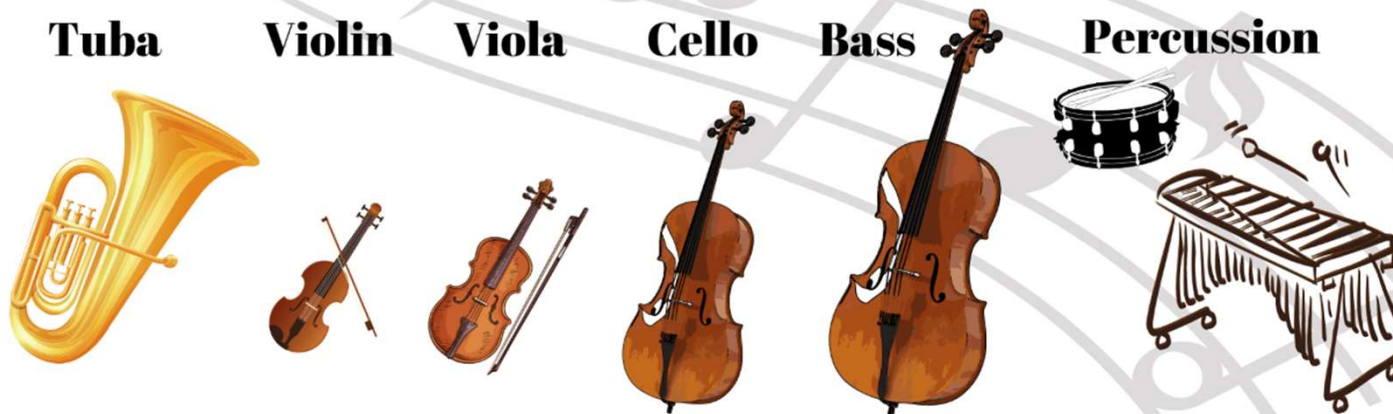


# Which Will You Choose?

**Flute Clarinet Saxophone Trumpet Trombone Horn**



**Tuba Violin Viola Cello Bass Percussion**



# Manners Matter!


---

 Please

Created by ingles360.net

Thank you 

Created by ingles360.net

 Excuse me

Created by ingles360.net

- Please
  - Thank You
  - I'm Sorry
  - Excuse Me
  - Yes Ma'am; Yes Sir
  - No Ma'am; No Sir
  - Use and Say kind words and gestures
- 
- Important training for the workplace



# Values Matter

- Citizenship
- Cooperation
- Fairness
- Honesty
- Integrity
- Kindness
- Pursuit of Excellence
- Respect
- Responsibility



# Mandatory Uniform School

---

- Correct polo shirt and pants/shorts must be worn daily or ANY HOM shirt M-F
- Appropriately fitting polo shirt with mandatory school logo affixed (Black, Gold, White) M-F
- Long Sleeve Grey Shirt can be worn M-F
- Appropriately fitting Pants (not below waist). Black, Grey, or Khaki. Leggings ok, joggers ok.
- Closed shoes must be worn at all times (no flip flops, no open toe shoes, no open back shoes, no Crocs, no slides) Sneakers are the best!
- If you wear a jacket/hoodie, you must have an HOM shirt under
- No jeans/denim unless it is a Dress Down Day
- Special dress down days/activities will be announced through Connect-Ed and PTSA Emails, and student emails and usually cost \$1.00.



# Not Permitted

---

- NEW POLICY: No Shorts, No Bike Shorts, No Short Shorts
- NEW POLICY: No Skirts
- No Jeans/Denim
- No Crocs, No slides or flip-flops
- No bandanas, sweat bands, hats anything with sharp points, belt chains
- No clothing with inappropriate wording or symbols
- No hoods on your head
- No crop-top shirts. Shirts must cover your back and stomach
- If you are uncertain, please ask before you wear it.



# Safety and Security

---

- Single Point of Entry after 9AM.
- Full-time police officer (Officer Marban) 😊
- All adults must present photo ID to security desk for entry.
- If you see something, say something
- Fortify Florida for anonymous reporting





# School Hours

- School Day
  - 9:10AM-3:50PM
- Breakfast (FREE every day for EVERY student!)
  - 8:00AM-9:00AM
- School Store
  - 8:30AM-9:00AM
- Parent/Teacher/Student Conferences
  - 8:30AM – 9:00AM
  - Tues & Wed.
- Office OPENS
  - 8:15AM
- Office CLOSES at 3:20PM
  - Administration is not readily available until after 9:30AM.
  - During Arrival and Dismissal – staff is required to maintain the safety and security of all and may not be readily available to meet without prior appointment.

# General Attendance Information

- Student attendance is one of the MOST IMPORTANT when it comes to learning
- Students are considered late to school after 9:10AM
- If Students are late to school or class they can/will receive a detention.
- Detention to be served afterschool 3:55PM – 4:55PM on Wednesdays.
- Unserved Wednesday detentions will be issued Saturday Detentions.
- If a student has a note from a parent or is brought to school by a parent after the bell, this is considered excused.
- Student early dismissal ends at 3:20PM
- Adults must always have an ID to pick-up children early and must be on either emergency contact card or computer screen.





# Arrival/Dismissal/Clubs Information

- Arrival and dismissal procedures (cafeteria & outside AM; outside PM)
- Every morning before 8:40AM, students will remain in the cafeteria.
- After 8:40AM, students will wait outside until 9AM to enter the building
- At dismissal, students will wait outside for parent pick up.
- At dismissal, students who ride the (yellow) school bus are to meet in the auditorium in their bus stations to wait for the arrival of their bus.
- All clubs and sports begin at 4PM sharp!
- After 4:15PM, no personnel is on campus, so for safety purposes, please do not allow your child to stay after school past 4:15PM.
- Quick survey for student arrival and dismissal check student email
- FYI: No more Wednesday early release day. Regular hours...



# Drop Off and Pick Up Area

**Please NEVER EVER drop off your child ON Ives Dairy Road** (HIGH TRAFFIC – VERY DANGEROUS!!!)

- The kids are NOT paying attention, we MUST help them stay safe!
- Best Drop-off time 8:30AM, Best Pick-up time 4:00PM. Use the circle for pick-up.
- Students will remain in the cafeteria until 8:40AM, then go out to the front of the school to wait until the bell rings at 9:00AM to enter the building. Students are NOT to be anywhere else unless they are with an adult or have a pass.

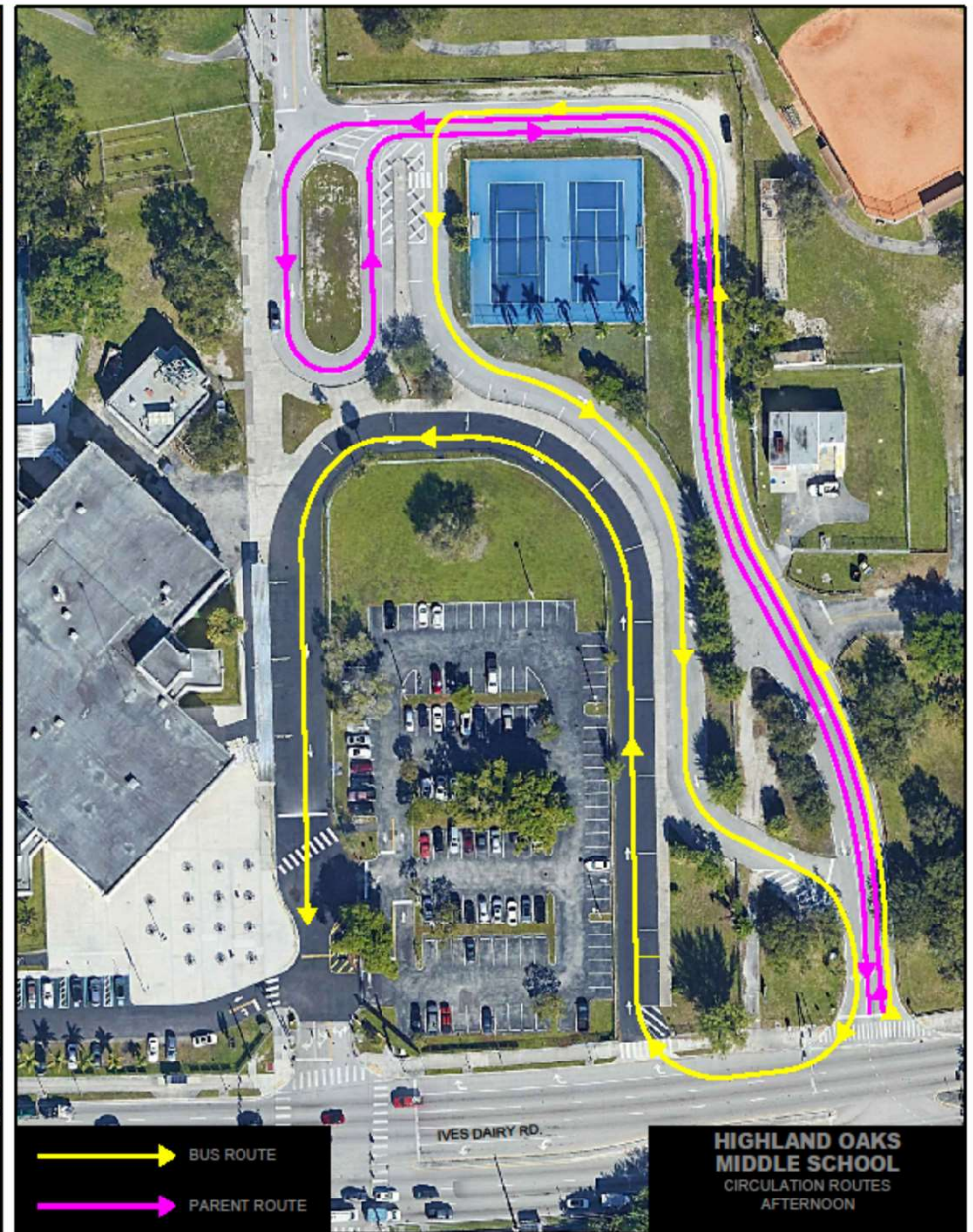
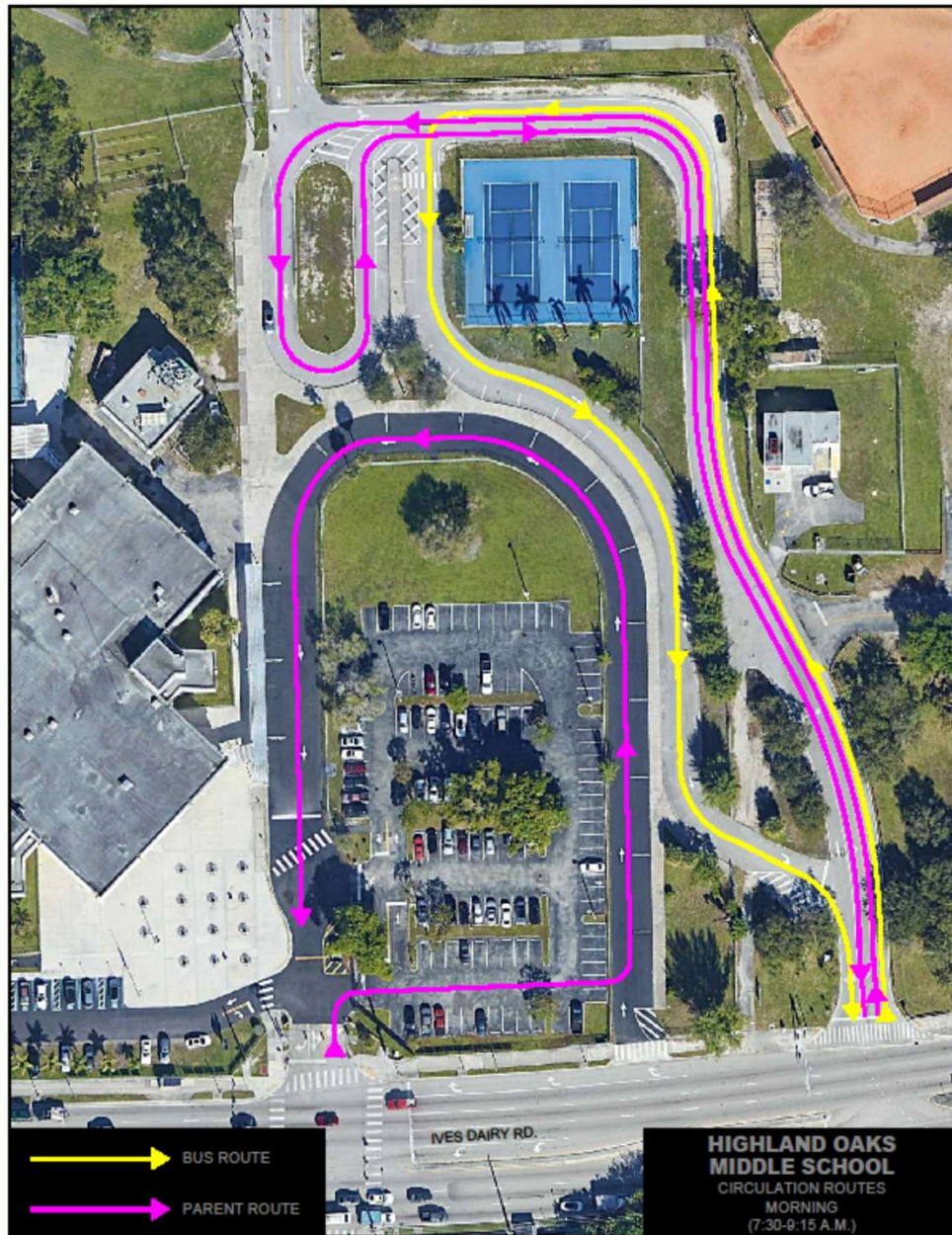
**Students are NOT allowed to go to the elementary school.**

- Students are **NOT** to be at the park before or after school. They MUST wait on campus. Park = mosquitoes, alligators, strangers, NO SUPERVISION.
- If you are picking-up, before you leave, show your child where to meet you at dismissal.





# PARENT/ BUS LOOP





# construction zone



FYI: Intersection  
Improvement Project

- Project for intersection improvement project at NE 203 street between State Road (SR) 5 US 1 and West Dixie Highway
- Started Fall 2021 and is still going!!!

# TRANSPORTATION

---

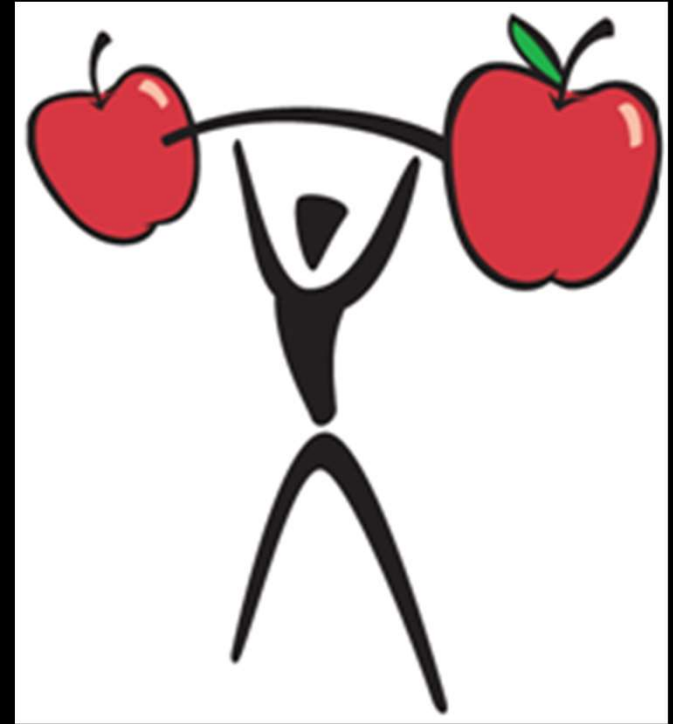
- Private Bus Services
- Yellow School Bus
  - Please use QR codes to sign up for transportation request
  - Check STUDENT or PARENT PORTAL
  - Decisions are made by District Transportation Office (not School).



# Health and Wellness

---

- Asthma Form
- EPI Pens Form (Severe Allergy/Allergic Reaction)
- Epilepsy Form
- Diabetes Form
- Medication Form
- Seizures
- Mental Health
- Physician's Statement & Mutual Exchange Form
- Medical Conditions (physical, emotional, mental)
- Teachers and office and staff need to know. The more people who know, the more we can help





# General School Policies

- Students can purchase school supplies from the school store including uniforms and basic school supplies and snacks
- Cell Phones and all other electronic devices are not to be out nor should they be during the school day or when students enter the building. School personnel is to be respected and this policy is strictly enforced. The phone will be confiscated and submitted to the office to be tagged and secured in the school safe. A parent can pick up phone at the end of the day or next school day in the main office. Student can get the phone at the end of the day.
- WHY?? School is not about cell phones, social media, text messages, internet, music, or other functions. School is about focusing on learning. For middle school students, the phone/electronic device becomes a distraction and focus point with friends during class time and hallway time.
- Checking out a Device? We will use devices in ALL classes , so either check one out or BYOD. Teachers will tell you when you will use this. (See first day folder for all of this info)



# Cell Phone Policy

---

- According to new State Statute – A Teacher’s Bill of Rights, teachers reserve the right to collect all cell phones and secure them in the classroom at any time during the instructional day.
- Should a student encounter an emergency, every classroom is equipped with a working telephone.
- Staff in the Main Office is also available to make parent/guardian contact or assist a student with using a school phone.





# General School Policies

- We are a mandatory i-Ready Reading and Mathematics school. Students will take pre-tests/diagnostic tests in their language arts and math classes and then a letter will go home with iReady individual assignments.
- Students must come to school Ready to Learn with necessary supplies (paper, pencil, pen, **book bag**, etc.) and their completed Home Learning Assignments and projects on time. A laptop/device is required for all classes, every school day.
- Communicate with your child's teachers (phone calls, email, parent/teacher conferences).
- Conferences can be scheduled for Tuesdays and Wednesdays – 8:30AM-9:00AM.
- School Uniforms worn daily, or detentions will be issued.
- If a student is absent, they must have a note from home/doctor and get an admit for the office. A student must be in school for two hours in order to be marked present for the day.
- Students must be on time to school daily or detentions will be issued.
- Students must report to each class on time. Teachers will make parent phone calls to address concerns and may issue team detentions.
- We visit four classes each day. Day one...1234 Day two...5678
- Students should listen, follow directions, and be respectful to all staff and students. They should be kind to each other and helpful and not be disruptive in class or in hallways/cafeteria/or outside. Manners Matter! Values Matter!
- FYI: No Uber Eats or outside delivery of food. Please do not drop off food to your child. Free food is available in the cafeteria to ALL students.

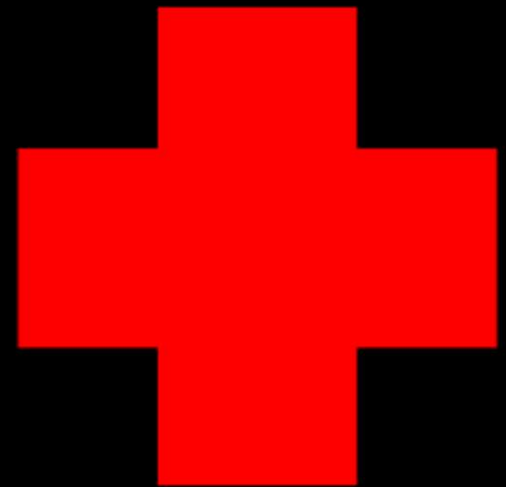
# Student Behavior and Consequences

- Students must display appropriate behavior so that all teachers can teach and all students can learn.
- Students must display behavior that allows for a safe, structured learning environment for all students and staff (If they SEE something, they need to SAY something to one of us).
- We teach them to think before you speak or before you act. Actions have consequences! We are training them to represent themselves and their families appropriately and to become effective productive adults in society.
- We are here to help, but we can't read minds, so we need to have them communicate with adults as to what is happening so we can intervene
- Understand that even social media from home can produce consequences at school if it is infringing on the safety and security of an individual
- Understand that events that happen on the school bus WILL result in school consequences.
- Understand that events that happen outside of the school can result in school consequences. (bus stop; social media; neighborhood)
- Participation in Outside School Sponsored events, field trips, activities, require appropriate behavior. A's, B's, & C's in academics and conduct
- Talk to your kids!!!! You be their HERO, Role-Model, their positive influence not TV or Music or their friends. They are our FUTURE.



# Emergencies

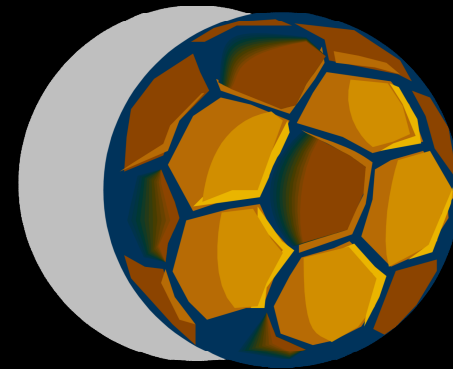
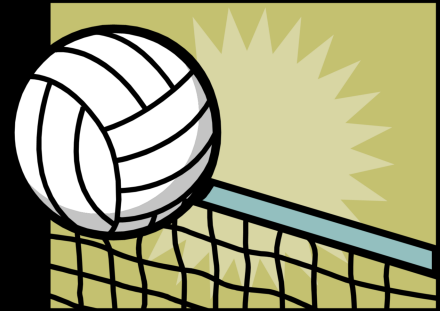
- Code Red/Lock-Down Monthly Drills
- Student Accidents/Emergencies
- Safety First
- Structured, Safe and Orderly Arrivals and Dismissals every day but especially if we have a situation or inclement weather, if this occurs, please be patient with us.
- We are the first responders





# Clubs and Sports

- Meet Regularly after school and on some weekends.
- Must have a 2.0 GPA in Academics and Conduct.
- Try-outs and information will be announced. Listen to daily morning & afternoon announcements.
- Sponsors are out in the hallways to answer questions
- Check SPORTS Board by the lockers.



# Important

- Make sure your cell number and email address are in our system
- Download the MDCPS App
- Student fees information
- Get into the portal for grades & attendance
- Going Home Day 1: LOTS of PAPERS
- HOM School-Wide Discipline Plan
- MDCPS Student Code of Conduct
- Emergency Contact Forms
- PTSA Contact Information Form
- Immunization forms (Blue/Yellow)
- Permission to Photograph
- Informational Letters that go home day 1 (like a lot of papers) ☺ A LOT!!!!!!

- PTSA monthly meetings in Media Center
- Participate in school-wide fund raisers
- Join EESAC (monthly meetings Media Center)
- Join PTSA (nominal fee)
- PTSA has social media updates [www.facebook.com/hom.ptsa](http://www.facebook.com/hom.ptsa)
- Become Informed and Active Parents through meetings that discuss new state standards, graduation requirements, educational trends
- Use the Parent and Student MDCPS Portal to check grades
- Use email to communicate with Teachers and telephone
- Check school website
- Check messages for parents and students on your phone and email and text from school
- Review Flyers for parents, students, and community
- Check out school marquee for parents, students, and community
- Attend Open House and Curriculum Night
- Become School Volunteers and Chaperones for trips
- Must update volunteer status every year on your portal
- Buy a Banner 😊
- Put up a birthday or other message on the marquee 😊
- Buy a Legacy leaf on our legacy tree 😊





# Additional Information

- Visit our website at
- <https://www.highlandoaksmiddle.org>
- [HOMPTSA@gmail.com](mailto:HOMPTSA@gmail.com)
- Follow us on Twitter at @HOMPANTHERS
- Like us on Facebook: @HOMPTSA
- Follow us on Instagram: @HOMPanthers
- Office 305-932-3810
- [ckushi@dadeschools.net](mailto:ckushi@dadeschools.net)
- [lisvaldes@dadeschools.net](mailto:lisvaldes@dadeschools.net)

- Parent Music Meeting
  - Beginning Band and Orchestra – TBA
  - Advanced Band, Choir, Percussion – TBA
- EESAC – TBA
- Music Rental of Instrument Night – TBA
- No School:
  - 9/4 Labor Day! ☺
  - 9/25 Teacher Planning Day
  - 10/27 Teacher Planning Day
- PTSA Meeting – 9/7
- Open House – TBA (5PM-8PM)
- Ice Cream Party for Student PTSA members! Happening in September!!





- Eat Breakfast!
- Bring a book bag and minimal supplies, teachers will give you a list
- You will report to your first period when we open the doors
- In first period , you will get your schedule of 8 classes
- Follow the directions given over the PA.....
- We will go Slow and Steady
- Go from class to class to meet your teachers
- You will EAT LUNCH when your teacher or PA tells you! 😊
- This might take a couple days to get you on a bus so have a family plan
- IF you are getting picked up arrange for a place to meet at the circle not the front of the school.
- Have a fun and busy first Day!



# SCHEDULE CHANGES

- No Schedule Changes will take place during the FIRST 10 days of school.
- Questions or Concerns about schedule changes:
  - [ckushi@dadeschools.net](mailto:ckushi@dadeschools.net)
- Elective Schedule Changes will also go through administration via parent/guardian form signature.
- CLASSES are at CAPACITY at the moment, requests may be denied due to space available.





- Visit the school store
- Please walk around and get to know your building.
- Check the wall for your first period location.
- Listing of Elective classes are also located on the walls.
  - Critical Thinking courses can be Cooking, Gaming, etc. **CHECK THE WALL**
- We might make changes that are different than your portal so check the wall/lockers.
- Some student volunteers and staff are around to help and answer questions.
- Questions or Concerns:
  - Email —  
[ckushi@dadeschools.net](mailto:ckushi@dadeschools.net) or  
[lisvaldes@dadeschools.net](mailto:lisvaldes@dadeschools.net)

- Now, you will log in using your Google ID if you use an Android device or your Apple ID if you use an iOS device.
- **IMPORTANT:** To continue seeing your children's grades and attendance information on the Parent Portal and on the Dadeschools Mobile App, your email address on your Parent Portal account has to match the one you use for your Google ID (Android) or Apple ID (iOS).
- Dadeschools.net for detailed instructions.

